

TABLE OF CONTENTS

1	Content	2
2	Verwendung von abylon logon business	Fehler! Textmarke nicht definiert.
2.1	Unterstützte Token's	2
2.2	Installation im Firmennetzwerk	Fehler! Textmarke nicht definiert.
2.2.1	Administration im Domainumfeld	3
2.2.2	Administration im Arbeitsgruppenumfeld	Fehler! Textmarke nicht definiert.
2.2.3	Erweiterte Administration	Fehler! Textmarke nicht definiert.
2.3	Umgebung prüfen	7
2.4	Weitere Dokumente und FAQs	Fehler! Textmarke nicht definiert.

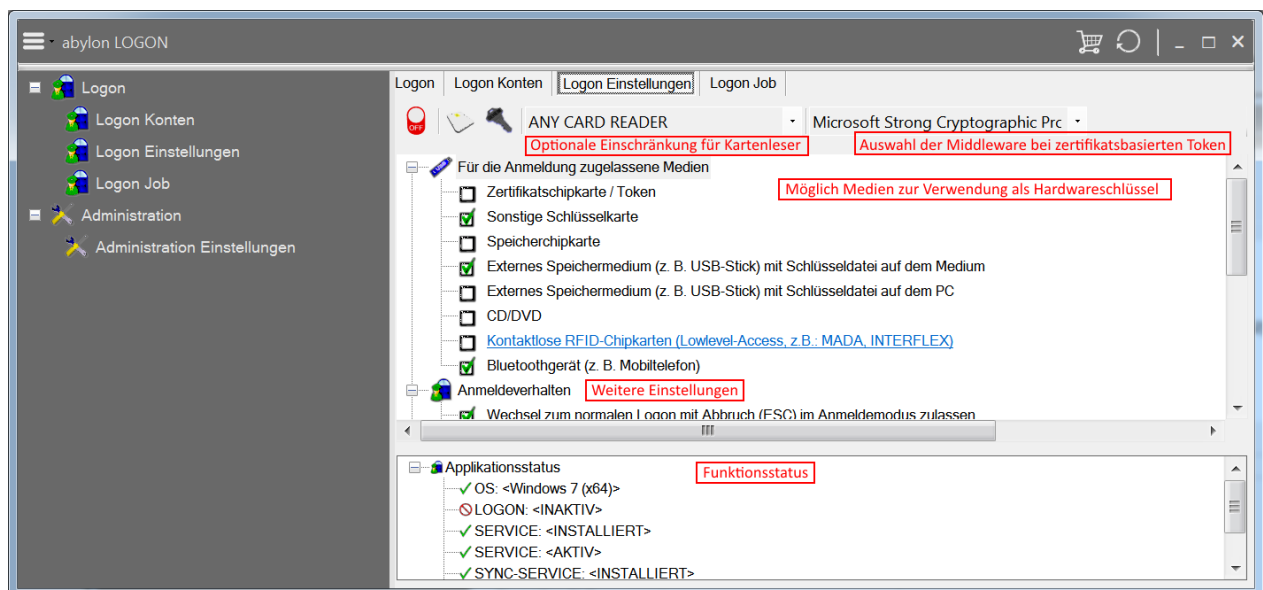
1 CONTENT

This whitepaper describes the necessary settings for abylon LOGON BUSINESS to centrally manage the abylon LOGON account files (key files) and to distribute them to the clients in the network.

2 USE OF ABYLON LOGON BUSINESS

The software abylon LOGON BUSINESS from **abylonsoft** offers an alternative logon option with various hardware keys (tokens) under Windows XP, Windows 7, Windows 8 and Windows 10. abylon LOGON BUSINESS allows users to log on to Windows clients without knowledge of the Windows password only with the help of a token. With abylon LOGON BUSINESS the credentials are encrypted with the help of the token and stored locally or centrally on a server. In the case of USB sticks, the user can choose whether the key files are stored directly on the USB stick or the PC.

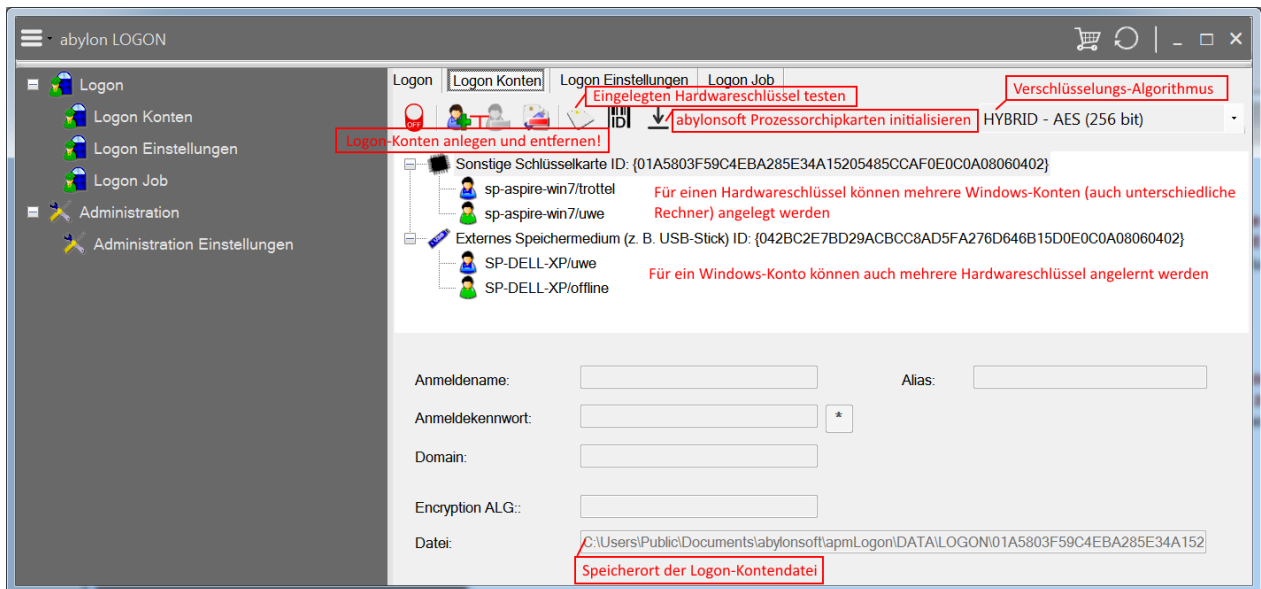
2.1 Unterstützte Token's



The variety of tokens is great. The following tokens can be used with the software of abylonsoft:

- All commercially available **USB sticks**
- All other **external storage media** that create a drive, such as SD card, CompactFlash, MemoryStick or multimedia card
- CDs and DVDs
- Various chip cards (Smartcards)

2.2 Installation in the company network



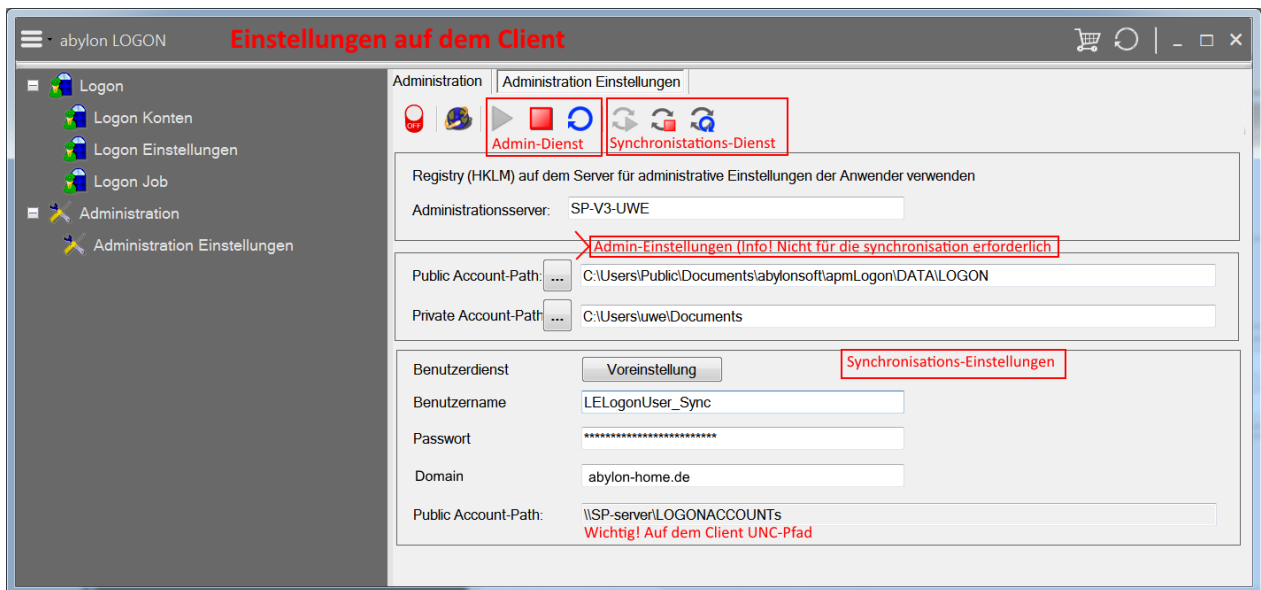
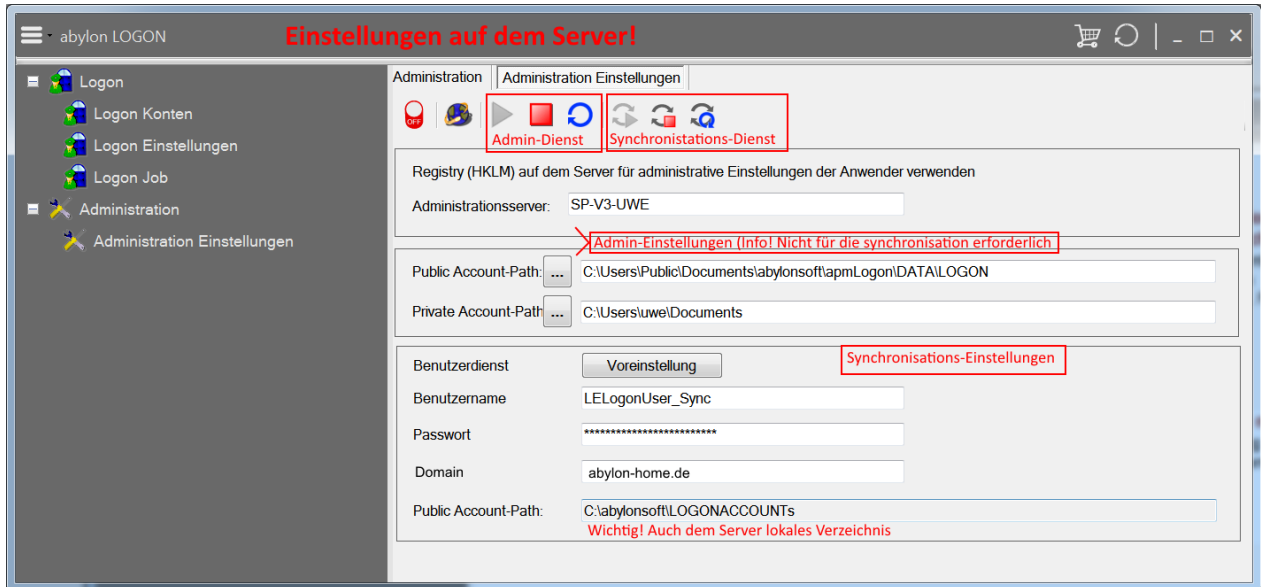
abylon LOGON BUSINESS must be installed on every client and on the server. After installation, the software is automatically activated and replaces the previous Windows logon. If the software on the server is only to be used for administration (creating and managing the account files), the logon functionality on the server need not necessarily be activated. Logon accounts can also be created without activation.

During the activation abylon LOGON BUSINESS checks whether it is in a workgroup or domain environment and makes all settings automatically. Two services (system context and user context) are also installed to distribute accounts in company networks.

A special user account is created for the service in the user context, which is used solely for network communication and login account synchronization. This account does not require any special rights and should be kept to a minimum with access rights. The user and the password for the SYNC account can be chosen at will. The only requirement is that the login name and password must be identical on all clients and the server.

2.2.1 Administration in the domain environment

abylon LOGON BUSINESS recognizes if it is in a domain environment. In this case, account synchronization is automatically activated and the domain is used as the server on the clients.



On the domain itself, the software creates a directory (C: \abylonsoft\LOGONACCOUNTS) with share (LOGONACCOUNTS) on drive C: in the network. Only the account files should be stored in this directory and in no case safety-critical data. The account files themselves are not security critical because they are encrypted with the tokens. The sharing is indispensable for the synchronization of the accounts.

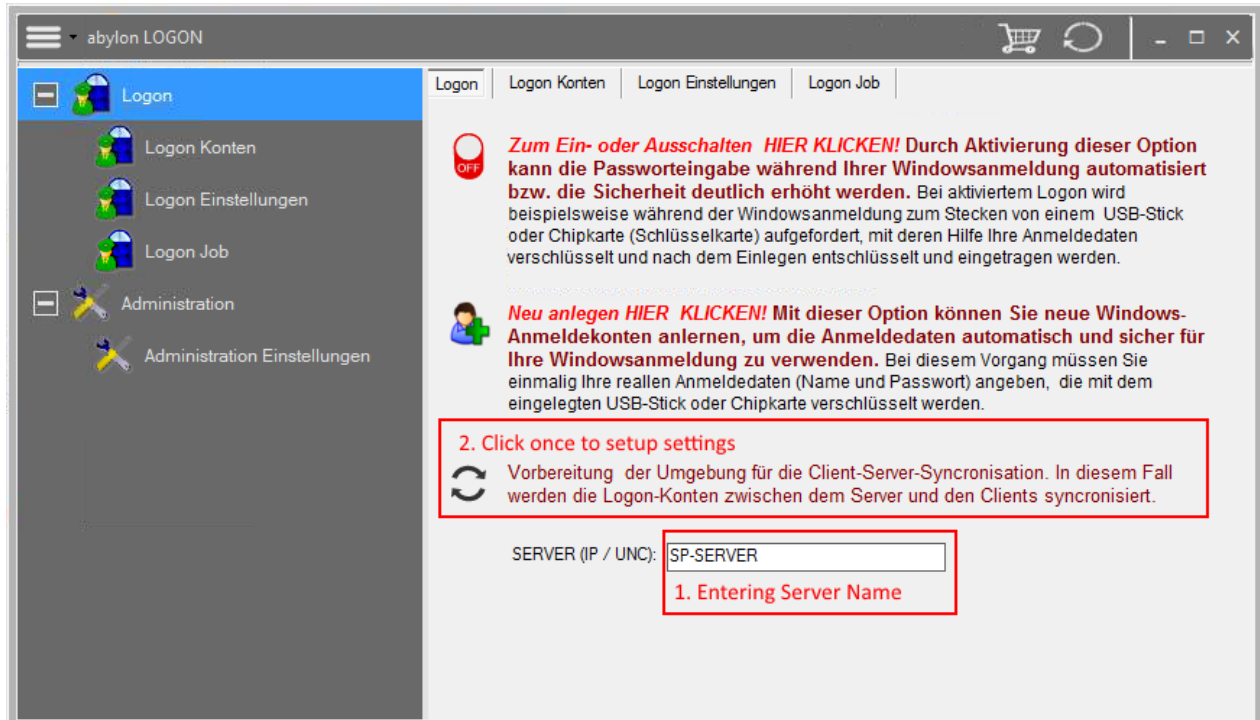
If an account is created on the server (domain) with abylon LOGON BUSINESS, it is stored encrypted in the share directory. Before there, the client services automatically distribute the files in the network so that they are available locally on the clients. If the domain or server cannot be reached (OFFLINE), the account cached locally on the clients is used.

In the event that users create their own accounts, these are stored back on the server and distributed from here back to the other clients. This means that a user who has created an account at client A can use it directly on all other clients (B, C, etc.).

If an account is removed from the server, it is also removed from the clients and is no longer available for logon. For clients that are temporarily NOT in the domain environment and work with the local account, synchronization is performed automatically when the client is back in the domain environment.

2.2.2 Administration in the working group environment

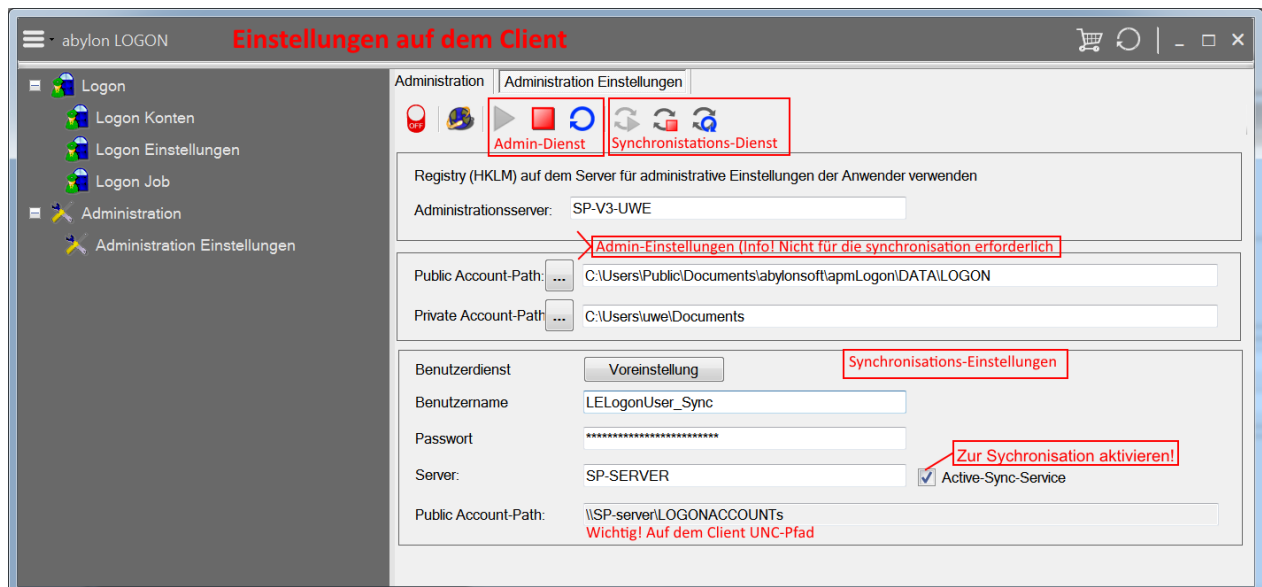
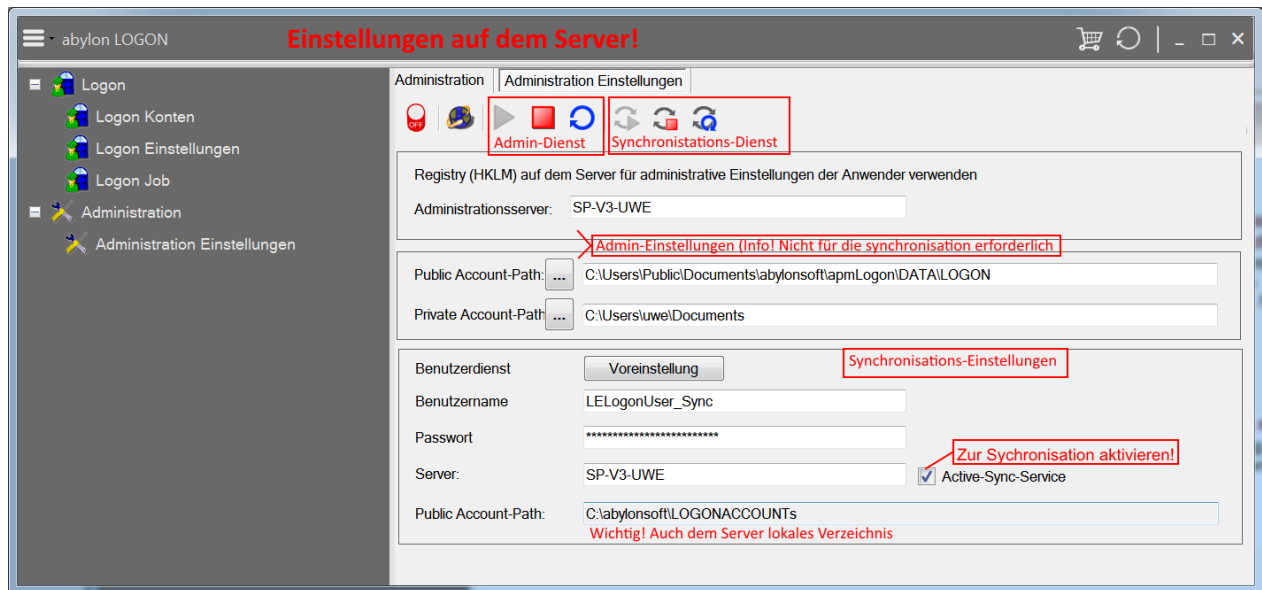
In contrast to the domain environment abylon LOGON BUSINESS does NOT activate the account synchronization automatically. To do this, the administrator must first define a client as server in the workgroup and manually activate synchronization under Administration->Advanced.



First, enter the computer name that is to serve as the server in the workgroup environment. By pressing the switch above it, the software automatically makes all settings.

This process is repeated on all computers.

Further settings are usually not necessary. On the settings page "Administration->Advanced" the settings are displayed again, as shown in the following screenshots. Only experienced users should make changes here.

WITHEPAPER – KONTENVERTEILUNG ABYLON LOGON BUSINESS



On the server client (UNC name or IP), the software creates a directory (C:\abylonsoft\LOGONACCOUNTS) with the network share (LOGONACCOUNTS) on drive C:. Only the account files should be stored in this directory and in no case safety-critical data. The account files themselves are not security critical because they are encrypted with the tokens. The release is indispensable for the synchronization of the accounts.

After activation, the workgroup field should check whether the account directory has been successfully created and released on the server.

Synchronization must also be activated on the clients under Administration->Advanced and the UNC name or IP of the client defined as server must be specified as server.

If an account is created on the server (workstation) with abylon LOGON BUSINESS, it is stored encrypted in the share directory. Before there, the client services automatically distribute the files in the network so that they are available locally on the clients. If the server (workstation) cannot be reached (OFFLINE), the account cached locally on the clients is used.

In the event that users create their own accounts, these are stored back on the server and distributed from here back to the other clients. This means that a user who has created an account at client A can use it directly on all other clients.

	abylonsoft – Dr. Thomas Klabunde Zum Eichwald 43 55444 Seibersbach	Homepage: www.abylonsoft.de Kontakt: www.abylonsoft.de/impressum.htm Autor: Thomas Klabunde	Erstellt am 18.12.2017 Geändert am 18.12.2017 Versionsnummer: 1.0
WITHEPAPER – KONTENVERTEILUNG ABYLON LOGON BUSINESS			

If an account is removed from the server, it is also removed from the clients and is no longer available for logon. For clients that are temporarily NOT in the domain environment and work with the local account, synchronization is performed automatically when the client is back in the domain environment.

2.2.3 Extended Administration

An extended administration (e.g. blocking of accounts) is not yet possible in version 16.50.3 of abylon LOGON BUSINESS, but will be considered for future versions.

	abylonsoft – Dr. Thomas Klabunde Zum Eichwald 43 55444 Seibersbach	Homepage: www.abylonsoft.de Kontakt: www.abylonsoft.de/impressum.htm Autor: Thomas Klabunde	Erstellt am 18.12.2017 Geändert am 18.12.2017 Versionsnummer: 1.0
	WITHEPAPER – KONTENVERTEILUNG ABYLON LOGON BUSINESS		

2.3 Checking the environment

If abylon LOGONBUSINESS is used with activated account synchronization, the following conditions should be checked:

- abylon LOGON BUSINESS is installed and activated on all clients and on the server (activation on the server is optional).
- The "LELogonUser_Sync" user account with identical password should be located on all clients and on the server. Please do not change the password or user name manually in Windows User Account Management. Changes may only be made in the administration mask of abylon LOGON BUSINESS.
- If logon is activated, two services should run on the clients (server optional) (LogonLEService). One service should run in the context of the system user and another service in the context of "LELogonUser_Sync".
- The "LELogonUser_Sync" user account must have read and write access to all account directories on an NTFS and share basis.
- After the 30-day trial period has expired, the synchronization service is automatically terminated and the function is deactivated until successful registration.

2.4 Further documents and FAQs

Further documents and FAQs (Frequently Ask Questions) can be found on our homepage in the download and support area: <http://www.abylonsoft.de>

Please do not hesitate to contact us if you have any questions about the software or special functional requirements. You will also find the email address and telephone number on our homepage in the imprint.